

Component Replacement - electrical -



Xperia L2
H3311, H3321,
H4311 (Dual SIM), H4331 (Dual SIM)

CONTENTS

1	Replaceable Components	3
	Primary Side	3
	Secondary Side	4
2	Tools	5
3	Component Placing.....	7
4	Additional Repair Info	9
5	Revision History	14

Baking prior to repair is required, if the board have been exposed to air more than 12 hours from PWB package opening. Too long exposure time increase the level of moisture in PWB and the PWB could delaminate during repair process and result in direct or latent failures and reduce reliability.

The boards shall be baked in 125°C ±5°C for 4 hours.

All Electrical components are RLC (Reversed Logistic Classification) level C, refer to the 3.4 Valid Spare Parts chapter in the Warranty Claim Instruction RE4249 about disposition of the parts.

Test after component replacement to refer to the 1314-6125 H3311/H3321/H4311/H4331 Test Instruction -mechanical.

Do not remove shield can lids (RF performance will be damaged).

If there are components located on right next to the component that intend to replace, protect those components with Kapton tape to avoid damages.

1 Replaceable Components

EXPLANATION OF ABBREVIATIONS USED IN THE COLUMN 'COMMENTS' BELOW

REPAIR METHOD

HA = Hot Air (removal & mounting)

ST = Soldering Tool (removal & mounting)

HA/ST = Hot Air for removal - Soldering Tool for mounting

BGA = BGA Station

BH = Bottom Heater

ADDITIONAL INFORMATION

⇒1 (2, 3, 4, etc.) = Proceed to 'Additional Repair Info' for further instructions in the indicated section(s).

Primary Side

Position	Component	Part no.	Comments
J4001	Nano SIM Card Connector Single	A/314-0000-00941	HA+BH → 1
J4001	Nano SIM Card Connector Dual	A/314-0000-00942	HA+BH → 1
J4002	Micro SD Connector	A/314-0000-00930	HA+BH → 2
J6005	Conn Audio Jack	A/314-0000-01117	HA+BH → 3
J6201	BTB CONN_BM20B(0.8)-30DS-0.4V(51)_0.400	A/314-0000-00878	HA+BH → 4
J6501	Conn Spring	A/314-0000-01121	HA+BH → 5
J6502	Conn Spring	A/314-0000-01121	HA+BH → 5
J6503	Conn Spring	A/314-0000-01121	HA+BH → 5
J6504	Conn Spring	A/314-0000-01121	HA+BH → 5
J6505	Conn Spring	A/314-0000-01121	HA+BH → 5
J6506	Conn Spring	A/314-0000-01121	HA+BH → 5
J6507	Conn Spring	A/314-0000-01121	HA+BH → 5
LED2101	LED Full Color	A/309-0000-00213	HA+BH → 6
MIC6002	Mic	A/312-0000-00080	HA+BH → 7
SW6501	Input Switch	A/315-0000-00086	HA+BH → 8
SW6502	Input Switch	A/315-0000-00086	HA+BH → 8
SW6503	Input Switch	A/315-0000-00086	HA+BH → 8

Replaceable Components

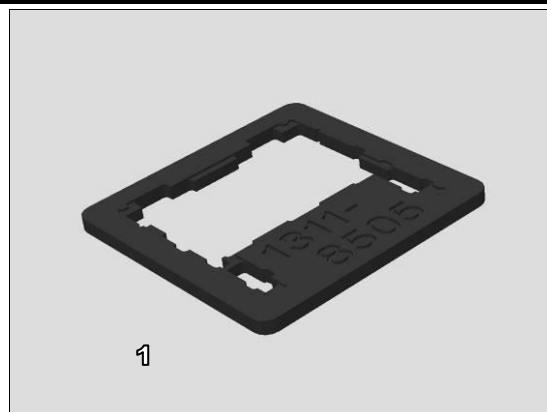
Secondary Side

Position	Component	Part no.	Comments
J2101	Battery Connector	A/314-0000-00884	HA+BH → 1
J6101	BTB CONN_BM20B(0.8)-40DS-0.4V(51)_0.400	A/314-0000-01031	HA+BH → 2
J6202	BTB CONN_BM20B(0.8)-30DS-0.4V(51)_0.400	A/314-0000-00878	HA+BH → 3
J6401	Conn BtB	A/314-0000-01106	HA+BH → 4
J6601	Conn BtB	A/314-0000-00363	HA+BH → 5
J9500	RF CONNECTOR WITH SWITCH _4 pin	A/314-0000-00933	HA+BH → 6
J9501	Holder, Coax. Cable	A/415-59290-0024	HA+BH → 7
J9505	Conn RF	A/314-0000-00587	HA+BH → 8
J9601	Conn RF	A/314-0000-00587	HA+BH → 8
J9700	Conn RF	A/314-0000-00587	HA+BH → 8
LED2301	LED Flash	A/309-0000-00286	HA+BH → 9
Z8001	Spring connector	A/314-0000-01025	HA+BH → 10
Z8003	Spring connector	A/314-0000-01025	HA+BH → 10
Z9701	Spring connector	A/314-0000-01025	HA+BH → 10
Z9702	Spring connector	A/314-0000-01025	HA+BH → 10
Z9800	Conn Spring	A/314-0000-01119	HA+BH → 11
Z9803	Conn Spring	A/314-0000-01119	HA+BH → 11

2 Tools

SPECIAL TOOL

1. PBA Soldering Fixture (1311-8505)



STANDARD TOOLS

1. Small Convection (Hot Air) Device



2. Soldering Iron



3. Soldering wick



Tools

4. Solder-wire



5. Solder-paste



6. Low Static Heat Protection Tape



7. Flux



Refer to the 1003-9107 Tools Catalogue for detail of standard tools.

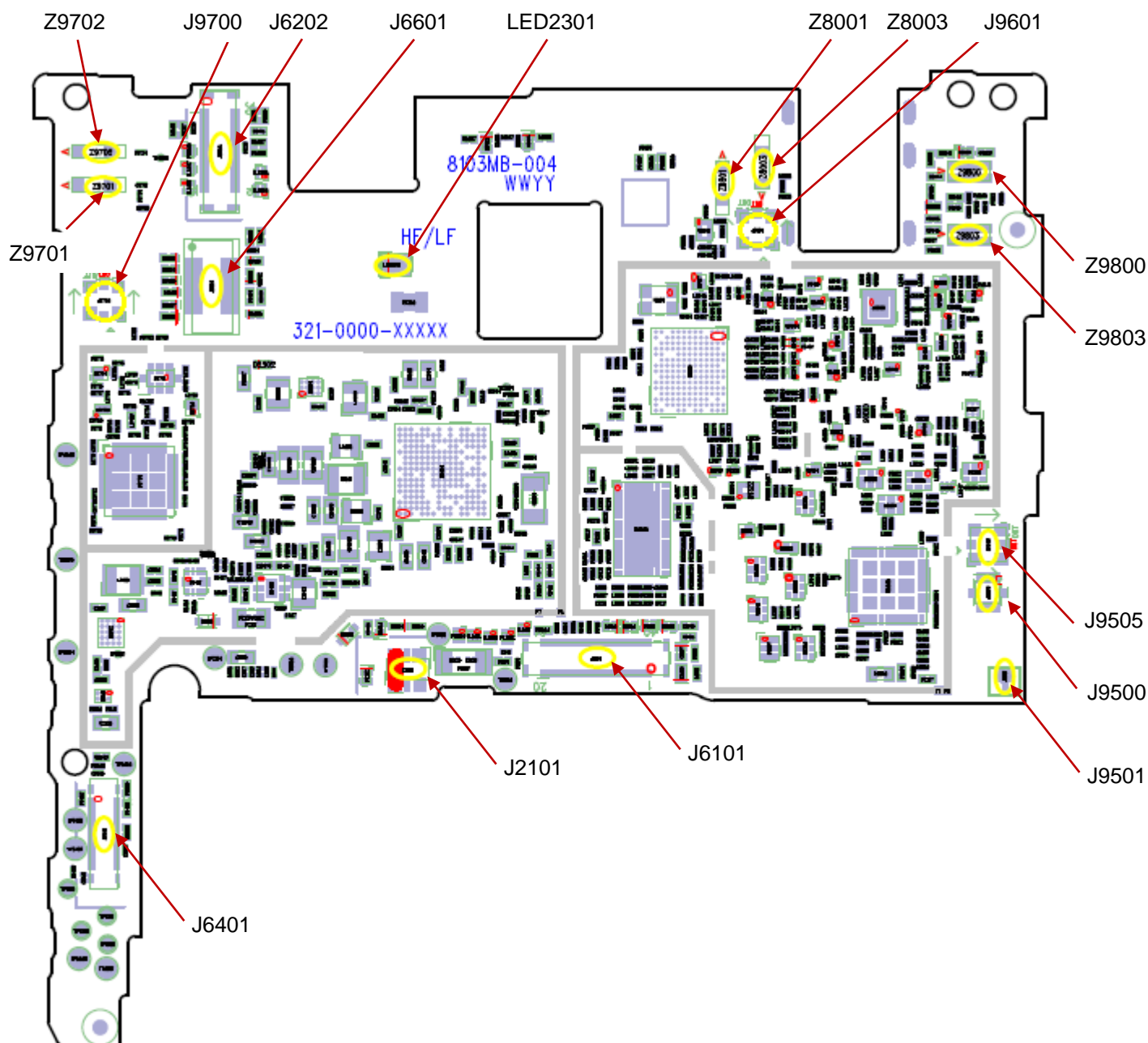
3 Component Placing

Primary Side



Component Placing

Secondary Side

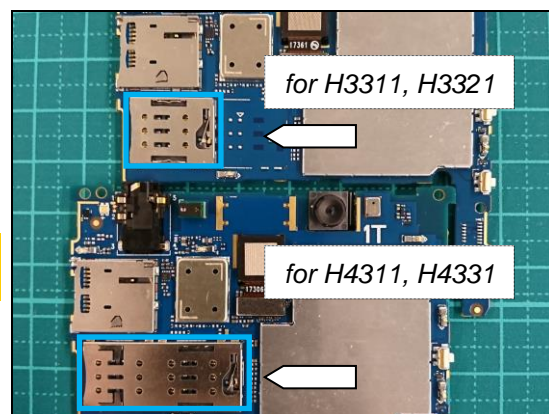


4 Additional Repair Info

Primary Side 1

J4001

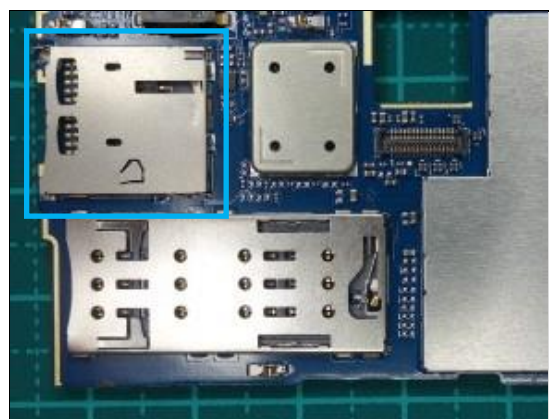
Replace if mechanical damaged (No network, restart, No SIM card is detected, Can't insert SIM tray door).



Primary Side 2

J4002

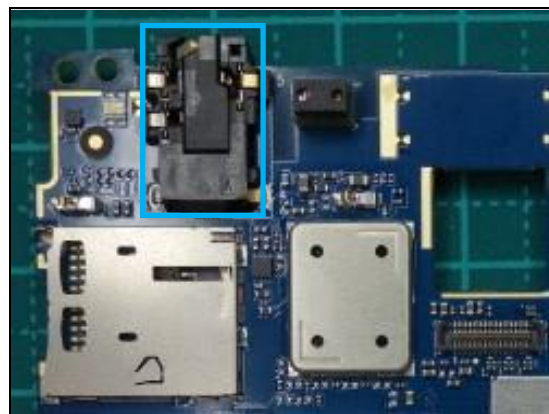
Replace if mechanical damaged (No SD Card is detected).



Primary Side 3

J6005

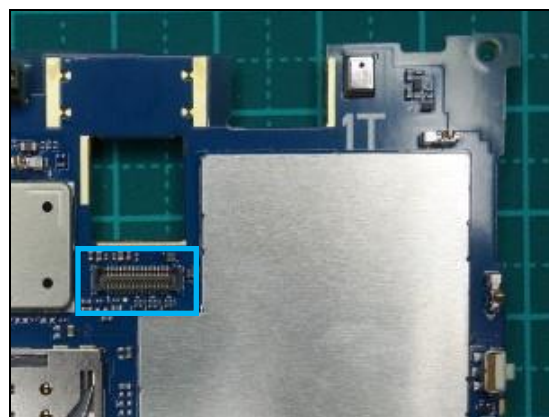
Replace if mechanical damaged (pin bend, foreign substance is found or No sound from headset / No FM radio).



Primary Side 4

J6201

Replace if mechanical damaged (Main Camera cannot work).

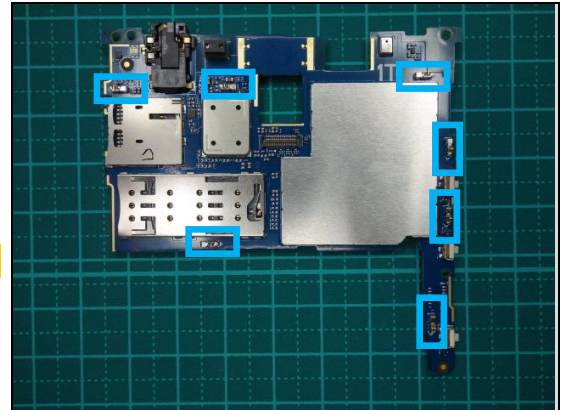


Additional Repair Info

Primary Side 5

J6501, J6502, J6503, J6504, J6505, J6506, J6507

Replace if mechanical damaged.



Primary Side 6

LED2101

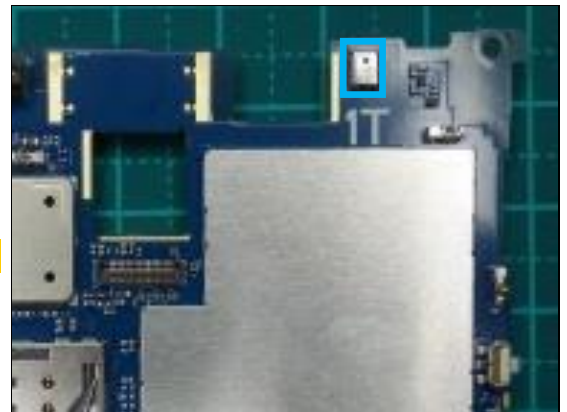
Replace if mechanical damaged (No Notification Light).



Primary Side 7

MIC6002

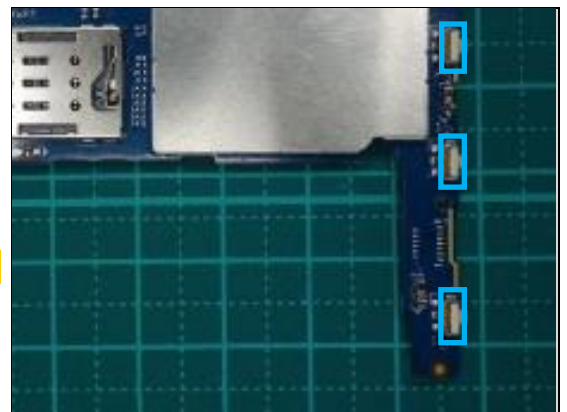
Replace if mechanical damaged(2nd MIC malfunction).



Primary Side 8

SW6501, SW6502, SW6503

Replace if mechanical damaged.

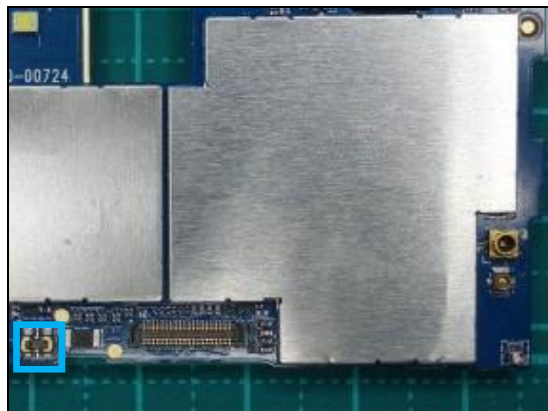


Additional Repair Info

Secondary Side 1

J2101

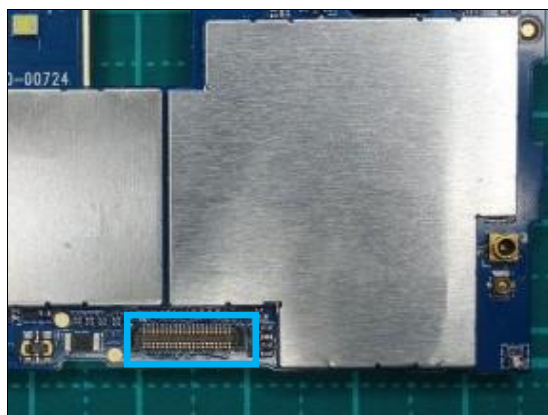
Replace if mechanical damaged (Cannot power on or cannot charge).



Secondary Side 2

J6101

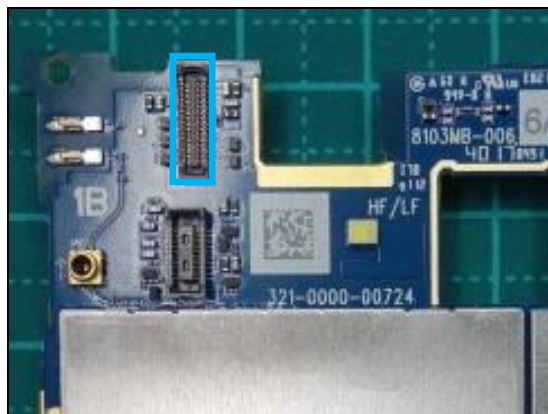
Replace if mechanical damaged (Display abnormal or touch panel related symptom!)



Secondary Side 3

J6202

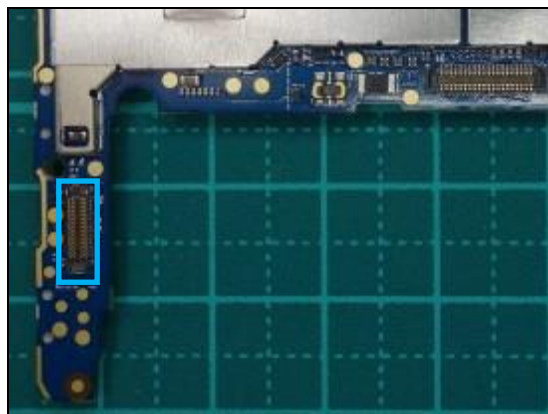
Replace if mechanical damaged (Main Camera cannot work).



Secondary Side 4

J6401

Replace if mechanical damaged (Cannot Charge/ USB data transfer error / Loudspeaker no sound related symptom).

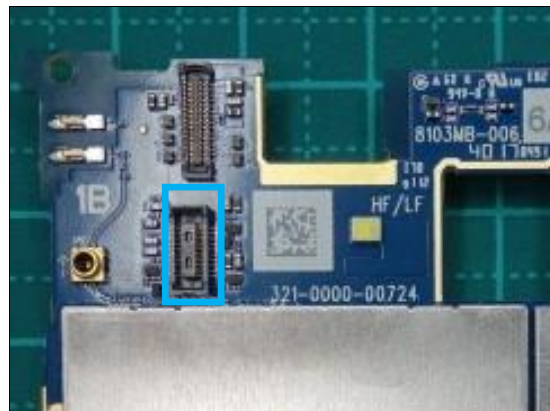


Additional Repair Info

Secondary Side 5

J6601

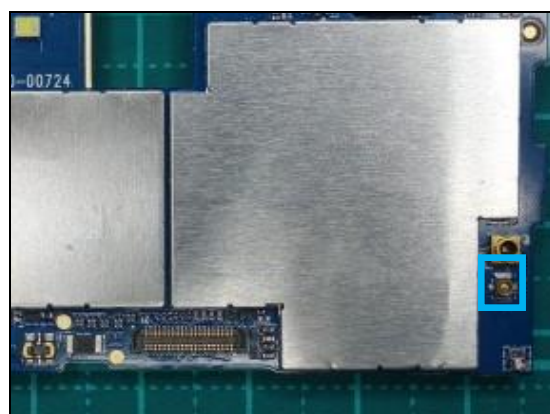
Replace if mechanical damaged (FPS malfunction).



Secondary Side 6

J9500

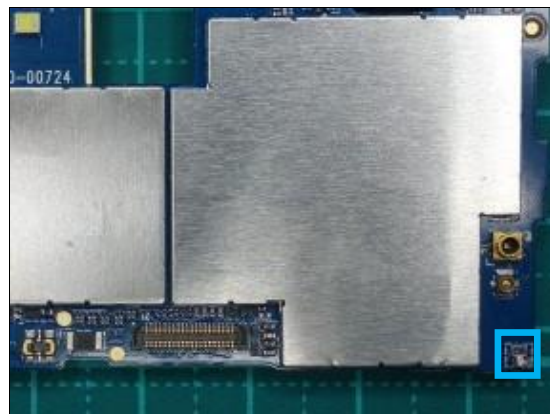
Replace if mechanical damaged (No or bad network).



Secondary Side 7

J9501

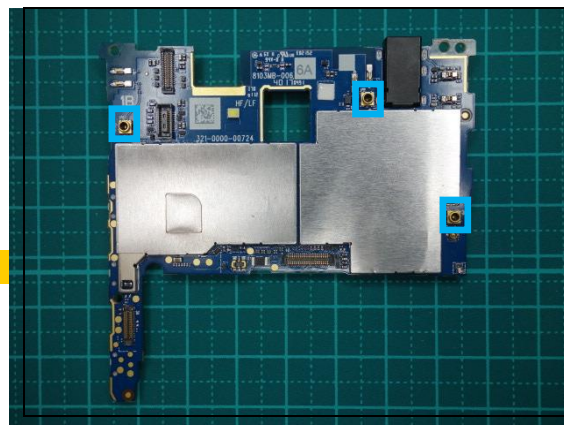
Replace if mechanical damaged (No or bad network).



Secondary Side 8

J9505, J9601, J9700

Replace if mechanical damaged (No or bad network).

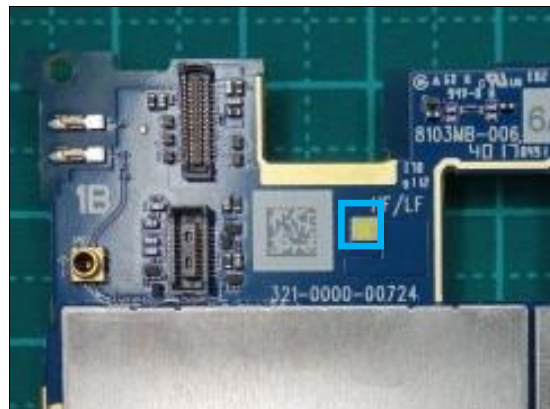


Additional Repair Info

Secondary Side 9

LED2301

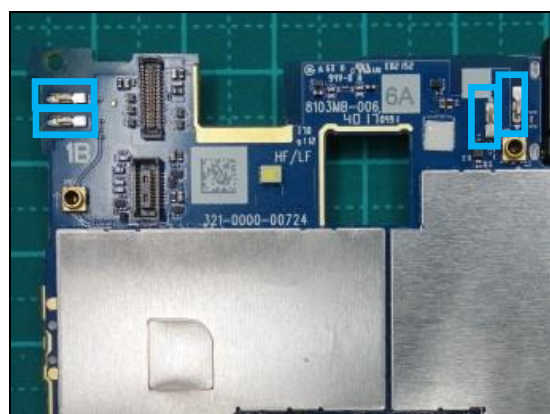
Replace if mechanical damaged (No Flash light).



Secondary Side 10

Z8001, Z8003, Z9701, Z9702

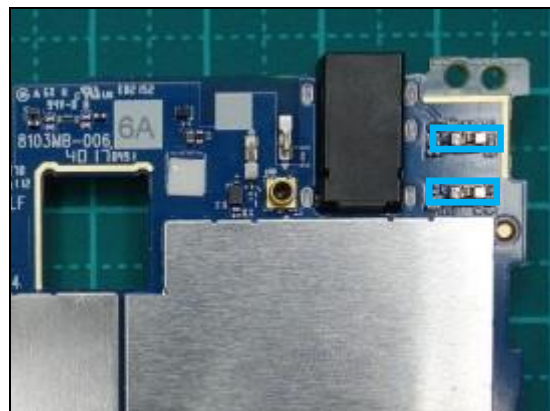
Replace if mechanical damaged (NFC malfunction).



Secondary Side 11

Z9800, Z9803

Replace if mechanical damaged.



5 Revision History

Rev.	Date	Changes / Comments
1	2018-Jan-12	Initial release